

**WASHINGTON COUNTY LIBRARY BOARD MEETING**

**Washington County Library Administration Office  
Central Park, Lower Level  
8595 Central Park Place, Woodbury, MN 55125**

**July 25, 2022  
6:30 – 8:00 p.m.**

**AGENDA**

- 1. 6:30 Call to Order  
Recognition of Public**
- 2. 6:35 Consent Agenda**
  - Approval of Agenda
  - Approval of Meeting Minutes (November 15, 2021, January 24, 2022, and May 23, 2022)\*
- 3. 6:40 Election of Officers**
- 4. 6:45 Staff Updates**
  - Strategic Plan Update\*
  - 2023 Budget Update
  - Statistics Update\*
- 5. 7:15 Library Administration and R.H. Stafford Library Tour**
  - Library Administration – Tina Kaple, Interim Library Director
  - R.H. Stafford Library – Margaret Gardner, Senior Library Manager-R.H. Stafford Library
- 6. 7:50 Board Member Discussion**
- 7. 8:00 Adjournment**

**\*Attachment**

*A great place to live, work and play...today and tomorrow*

Library Administration • 8595 Central Park Place • Woodbury, MN 55125  
Telephone: 651-275-8500 • TTY: 651-430-6246  
[www.co.washington.mn.us](http://www.co.washington.mn.us)

*Washington County is an equal opportunity organization and employer*



---

# Library Strategic Plan

Library Board Meeting | July 25, 2022

# Library Strategic Plan Timeline



# Library Strategic Plan Team



Staff from each classification



Staff from each branch



At least one Library Board member



Must be available Nov. 2 and 3, 9 a.m. to 2 p.m.



## Questions to Discuss:

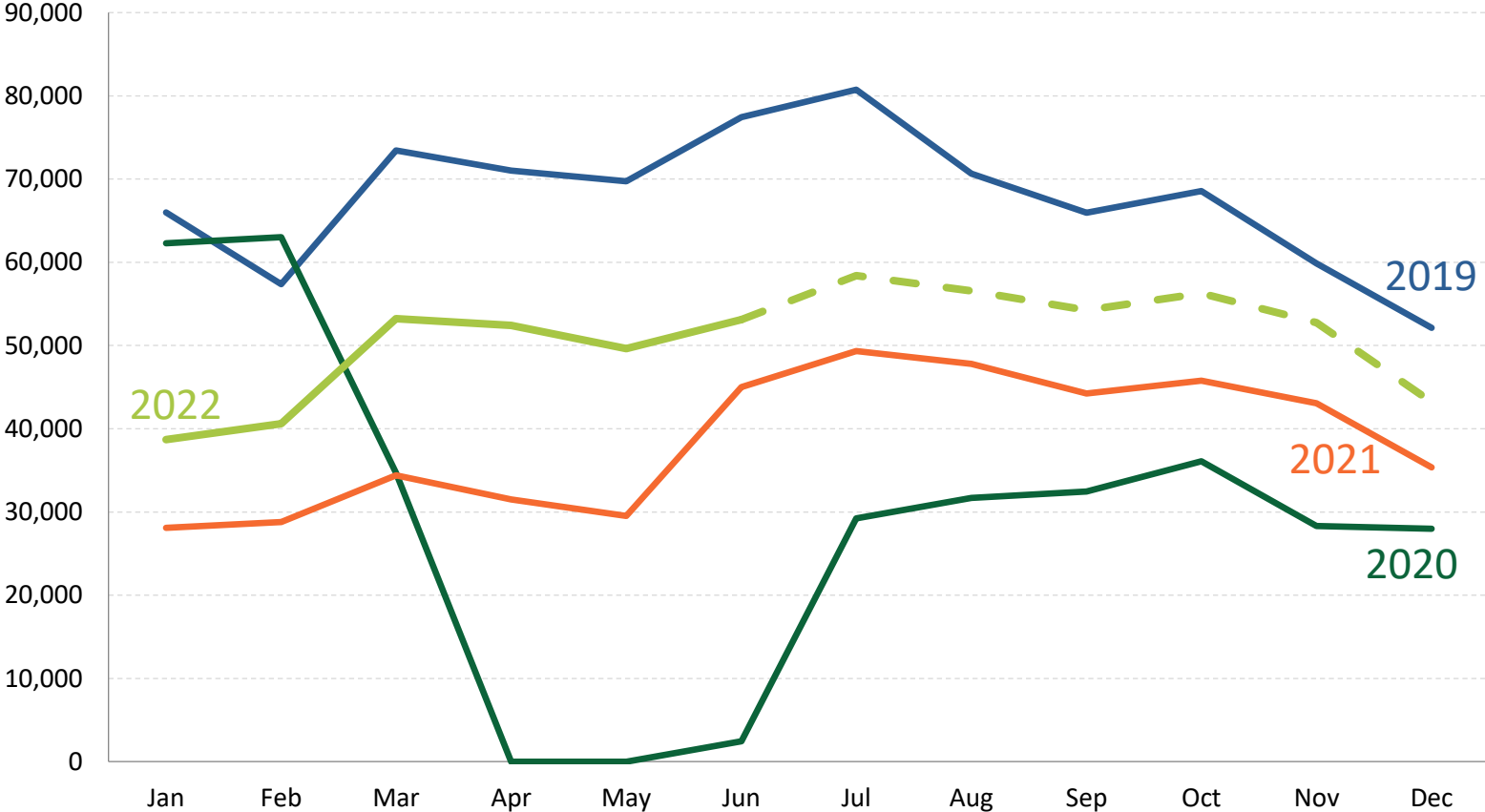
- How big can the team be while remaining effective?
- Are there others who should attend (such as community members or other departments)?



# Washington County Library Statistics Update

July 25, 2022

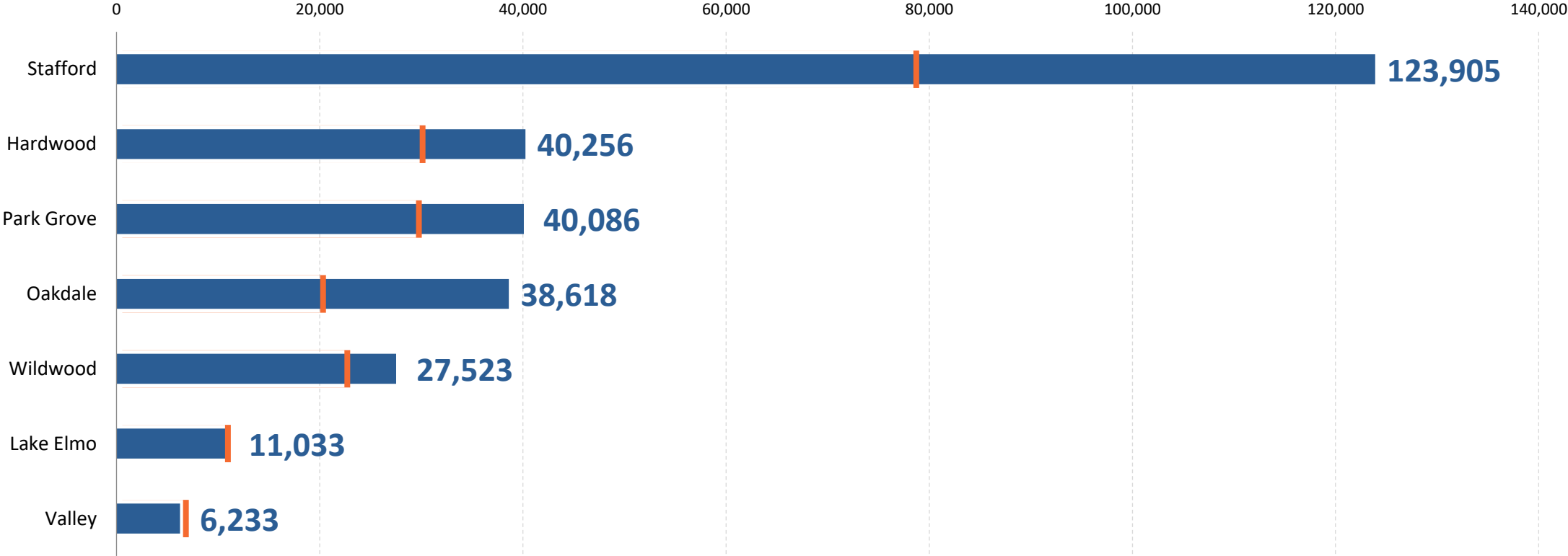
# Library visits



Category	YTD 2022	FY 2022 projection
Over 2021	46%	32%
Over 2019	31%	25%

# Library visits by branch

January to June 2022 in comparison to 2021



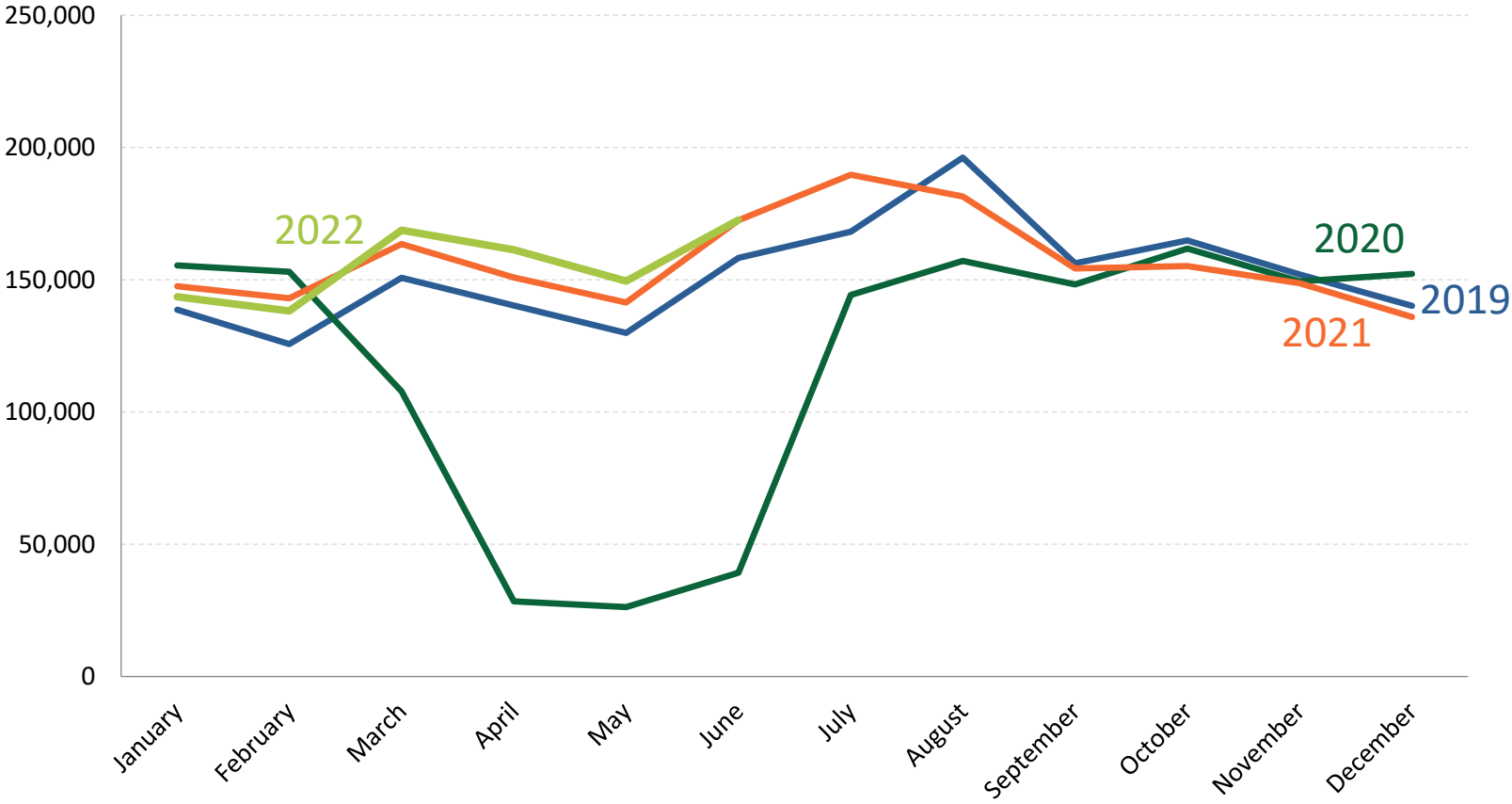
# Other service trends

January to June

	2019	2020	2021	2022	Trend
Express Libraries	3,184	3,700	5,599	3,902	↓
Computer Use	53,947	19,581	17,820	24,714	↑
New Users	5,543	3,090	3,643	5,450	↑
Digital Interactions	505	3,318	2,885	2,164	↓



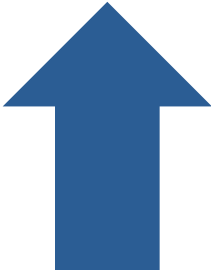
# Physical items checked out



YTD 2022



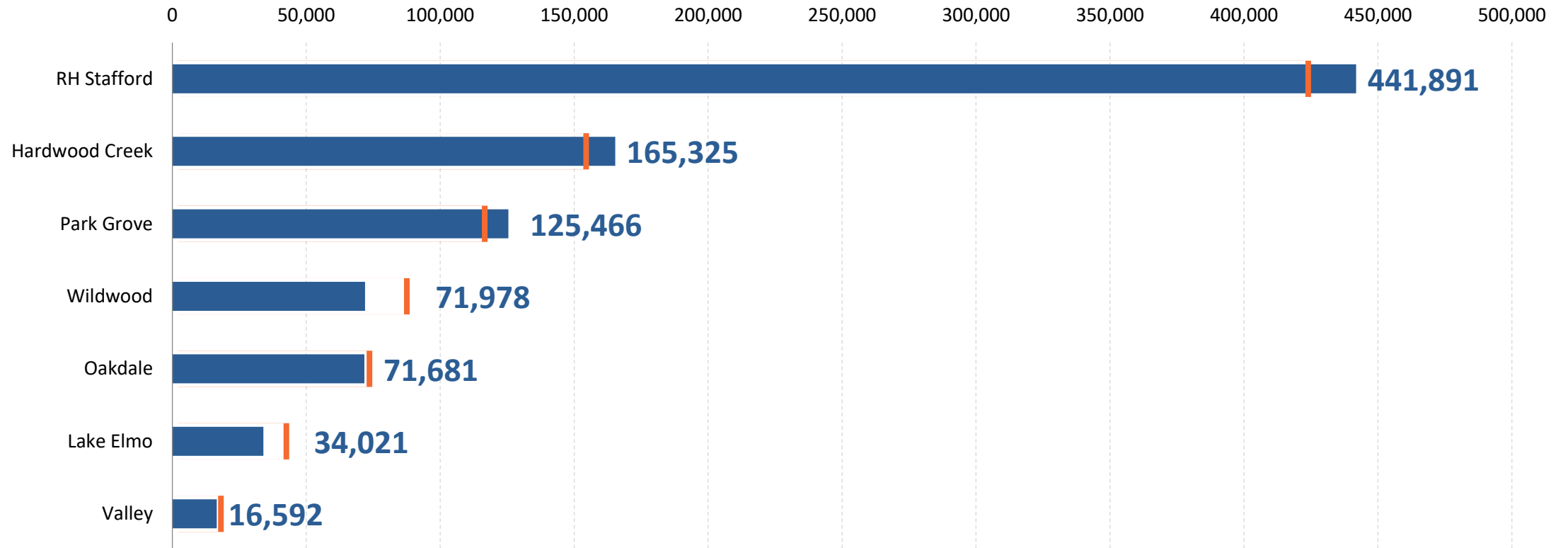
**2%**  
Over 2021



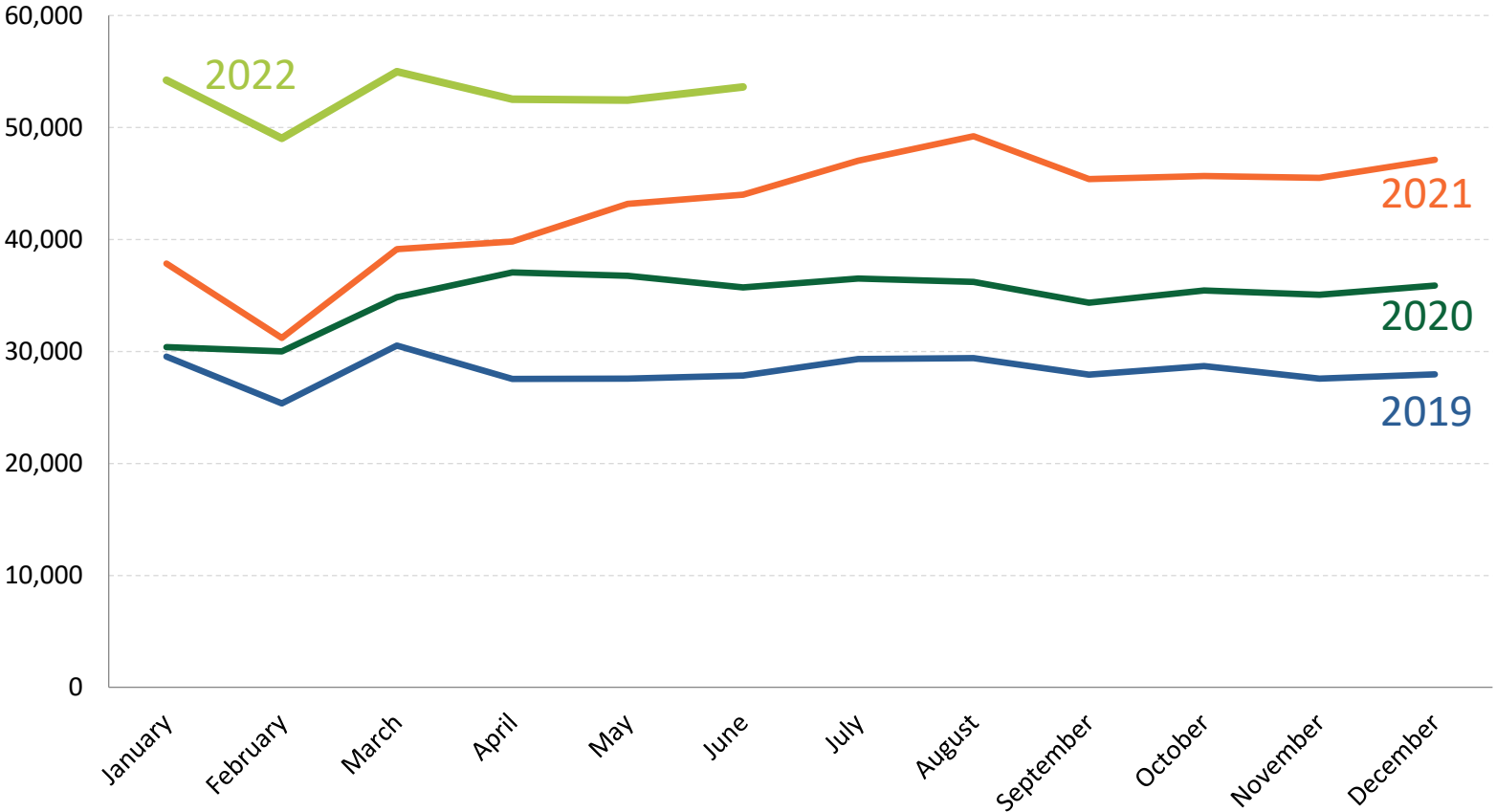
**11%**  
Over 2019

# Checkouts by branch

January to June 2022 in comparison to 2021



# Digital items checked out



YTD 2022

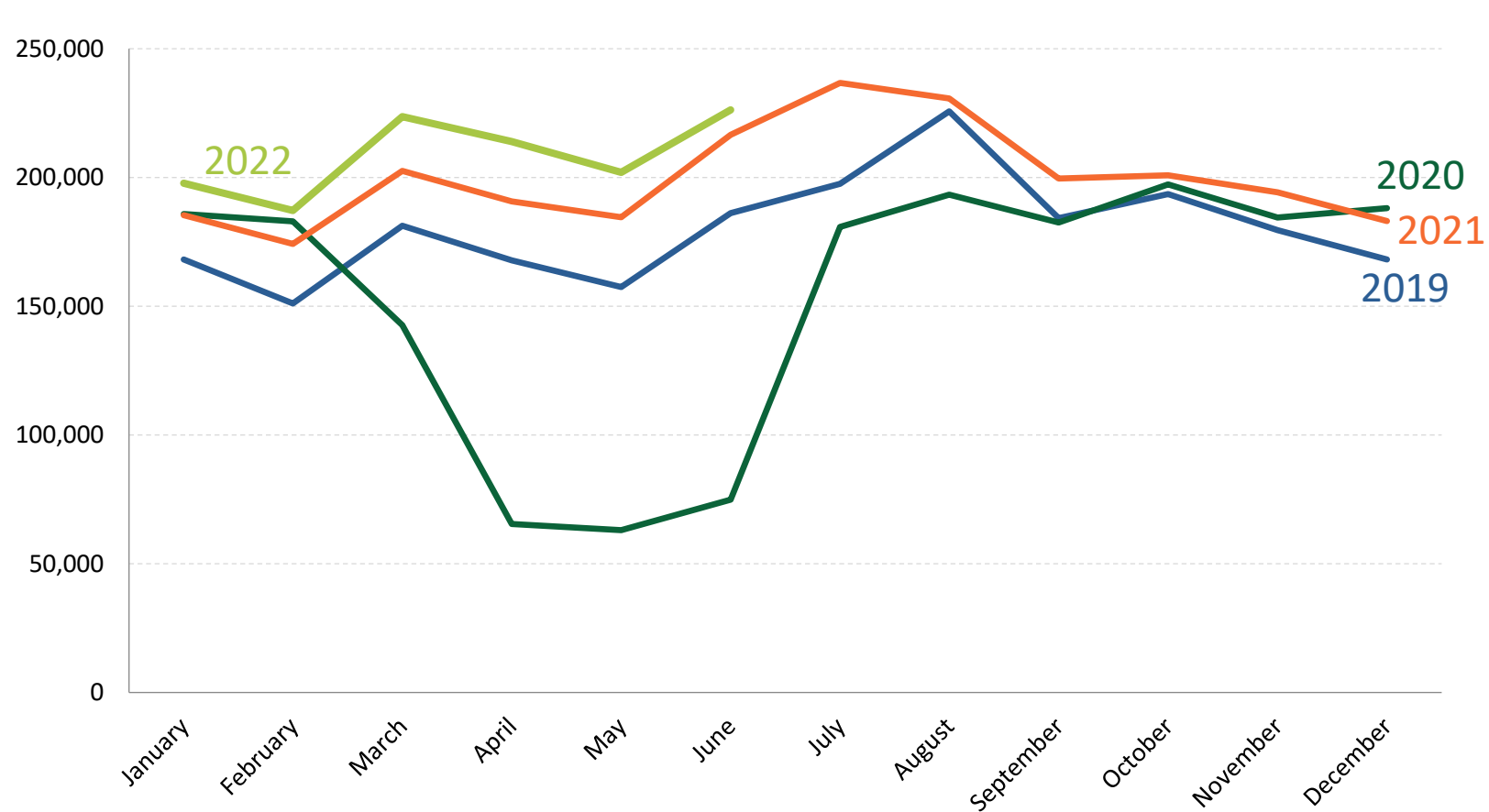


**35%**  
Over 2021



**88%**  
Over 2019

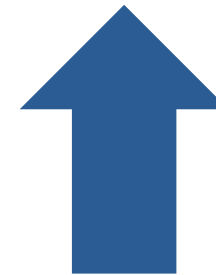
# Total items checked out



YTD 2022



**8%**  
Over 2021



**24%**  
Over 2019